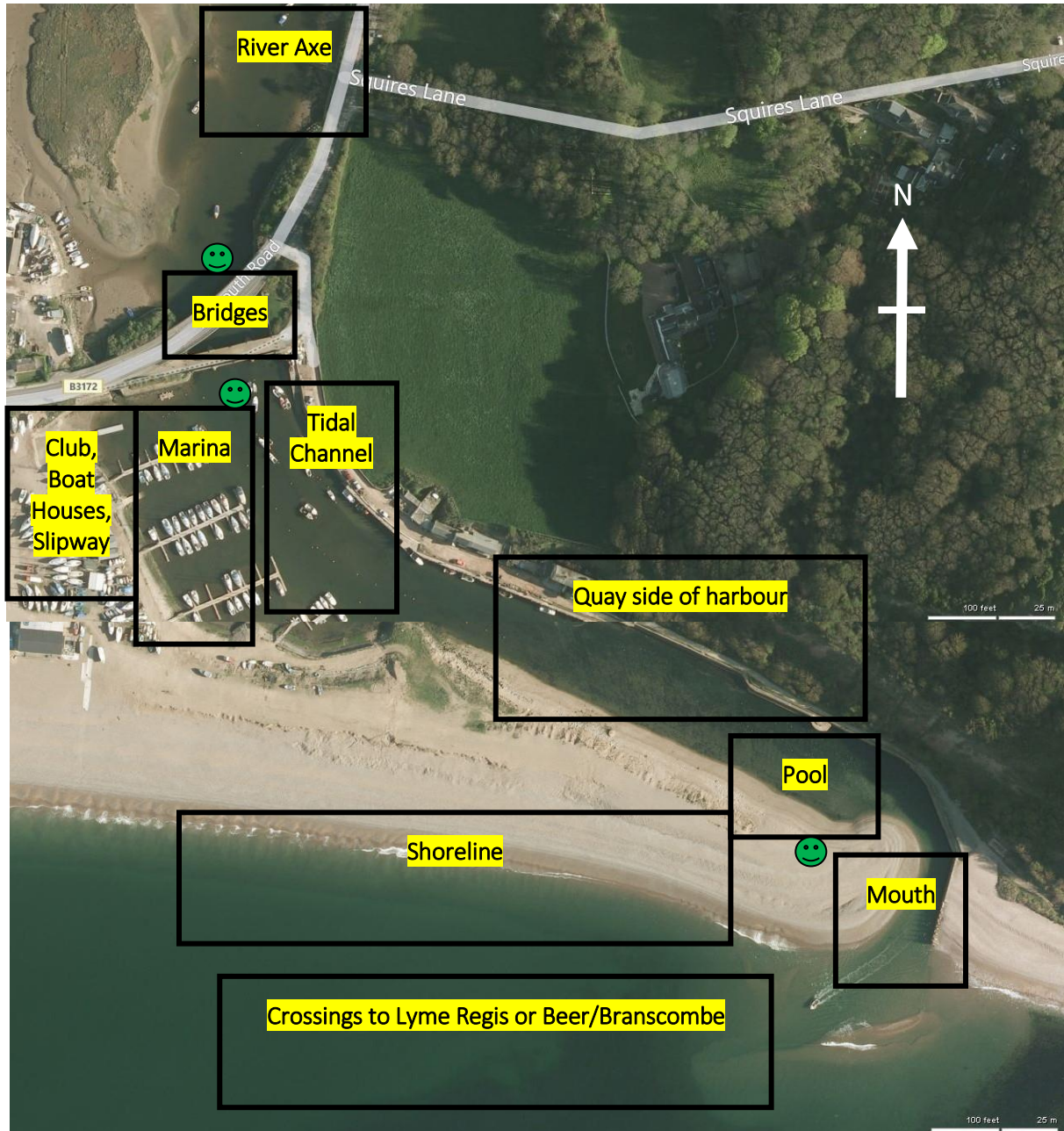


## AVCC – Hazards and Risk Control Measures for the Axe Estuary



Physical locations of areas used for local trips, club nights, courses, taster sessions and coaching.

😊 represent lookout positions)

*Control measures stated herein are the typical expectation in normal conditions. If the conditions are not normal then dynamic risk assessments must be made and appropriate additional control measures taken (including changing locations or not doing the activity). Example of abnormal conditions would include high wind, floods (high flow rates), more than average boat activity, dusk encroaching, etc.*

## AVCC – Hazards and Risk Control Measures for the Axe Estuary

### River Axe: Normal rendezvous points:

- Oak tree near Bird Hide.
- Red Basket or bay on river right north of Bridge.

### Additional Risks:

- Islands have crevasses – tripping/entrapment.
- Bird nesting/protective swans – avoid.
- Mud – glass – sewer pipe near golf club (waste).

### Bridges:

- Need L2/4\* permission to go thro.
- Go through as a group by meeting at rendezvous point first.
- Set an experienced lookout on opposite side to monitor boat activity and guide paddlers through.
- Loose netting holding bedrock down - avoid

### Club, Boat Houses, Slipway:

#### Briefing to include:

- Boatyard – trips/sharp objects
- Cars – beware
- Canoes – carrying/storing
- Marina – moving boats, tidal flow
- Slipway – very slippery
  
- Check water colour/quality prior to capsize/rolling.

### Marina:

#### Beware of:

- Boats – moving and stationary – keep away
- Speed boats with novice drivers – be very wary
- Set an experienced lookout in channel when moving between bays or to move under bridge.

### Tidal Channel

#### Beware of:

- Tidal flow pushing canoes onto boats or buoys.
- Moving boats
- Fishing
- Need permission of L2 Coach to travel down.

### Pool:

#### If using pool for games/coaching:

- Keep a lookout for boats.
- Have a guard near river mouth if outgoing tide.

### Quay side of harbour:

#### If using flow near piers for coaching:

- Incoming tide should be used.
- Set a lookout on beach to warn of fast moving boats.
- Have collection point agreed in case of capsize or boats coming.
- Low water – slippery, crevasses – entrapment.

### Shoreline:

Beware of fishing lines and rocks to East of mouth.

### Crossings to Lyme Regis or Beer/Branscombe

- Need 4\*/5\* leader.
- Set rendezvous points at buoys en-route.

### Mouth:

#### To go through the mouth:

- Need 4\*/5\* leader.
- Set a lookout on beach to warn of fast moving boats. Send experienced through first to act as gathering point/rescuers.
- Beware of fishing lines.
- Avoid whirlpools on end of stanchion during large tides.